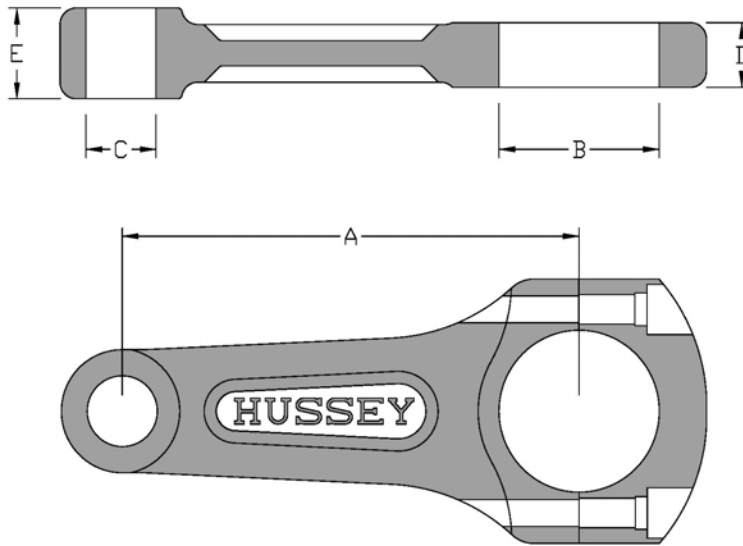






# Connecting Rod Order Write-Up Form



Billet Aluminum Rods	Dimensions
Length, Dimension "A"	
Big End Bore, Dimension "B"	
Small End Bore, Dimension "C"	<input type="checkbox"/> Pin Fit <input type="checkbox"/> Non-Pin Fit*
	Tolerance
Big End Width, Dimension "D"	Tolerance
Small End Width, Dimension "E"	
Bolts Included	<b>ARP L19</b>

\* Non-Pin Fit must be honed to finish size

<b>Customer</b>		<b>Order Date</b>	
<b>Ship To Address</b>		<b>Credit Card or Purchase Order</b>	
		<b>Name</b>	
<b>City, State Zip</b>		<b>Number</b>	
<b>Telephone</b>		<b>Expiration</b>	
<b>Fax</b>		<input type="checkbox"/>  <input type="checkbox"/>  <input type="checkbox"/>  <input type="checkbox"/> 	
<b>Email</b>		<b>Engine Model</b>	
<b>Customer Signature</b>		<b>Racing Class</b>	

Connecting Rods are sold in sets of 8 each per size. All Connecting Rods are custom machined to your engine requirements. Customer sign-off on dimensions are required before orders will be accepted. Fax to 724-251-4276. Any questions, please call 1-866-940-1308.